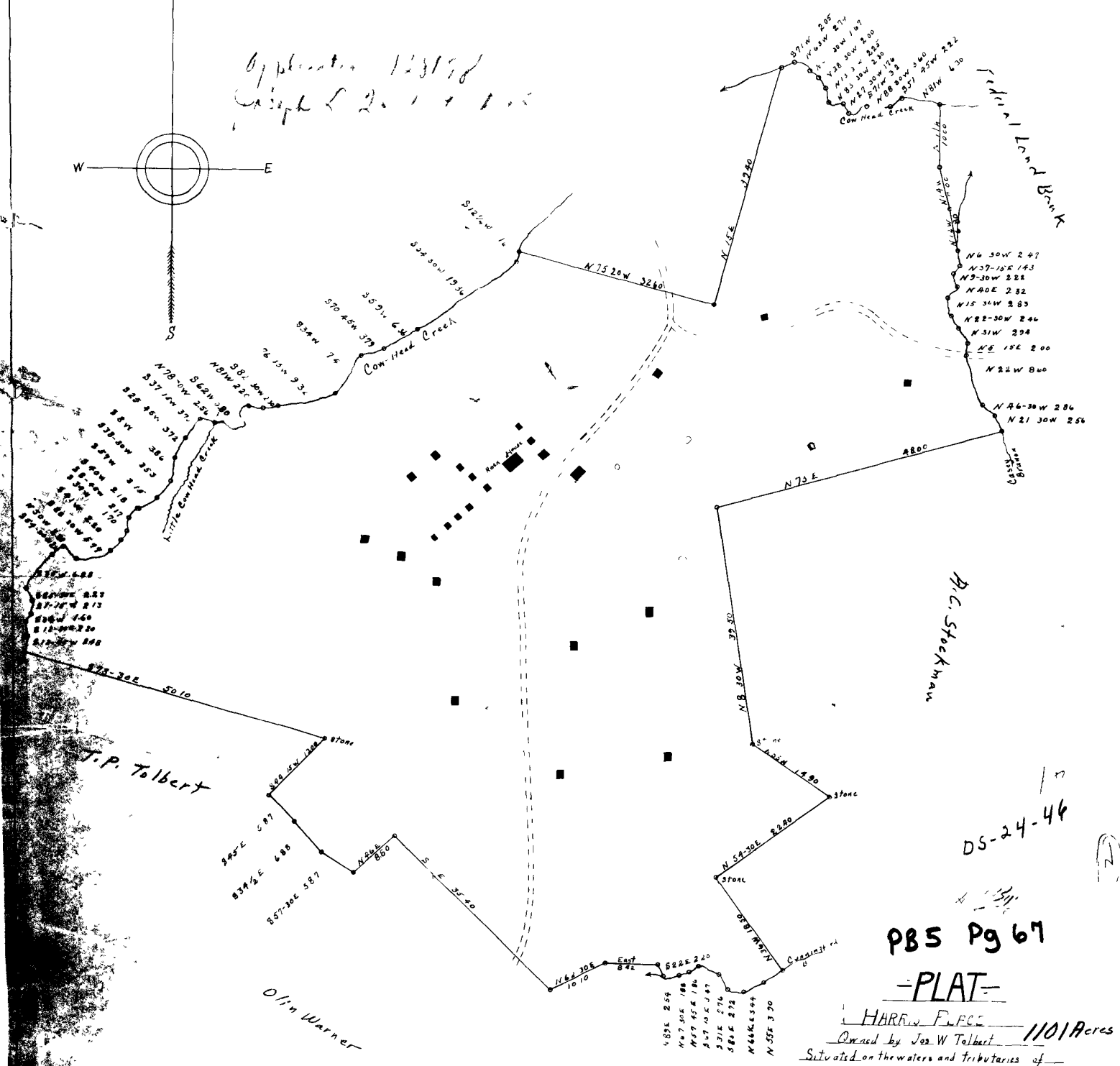
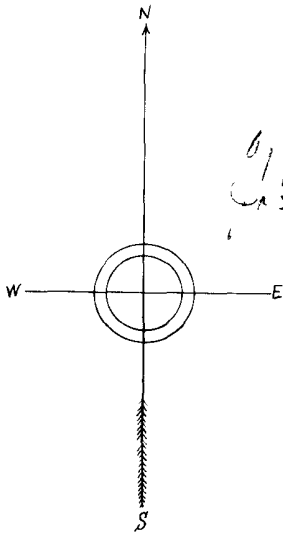


Application 123198
Joseph L. Tolbert



DS-24-46

PBS Pg 67

-PLAT-

HARRY F. REE 1101 Acres

Owned by Joe W Tolbert

Situated on the waters and tributaries of

Cowhead Creek. Contains 1101 Acres

The Creek and branch line shown on Map

in some places represent the old cut, in other

places the running stream.

Surveyed Mar 1934 by

J.H.B. Kinard

Recorded March 10, 1950, 12 15
G. J. Milling
ccp

M. D. Hunter



Scale 1/2 inch = 1 mile